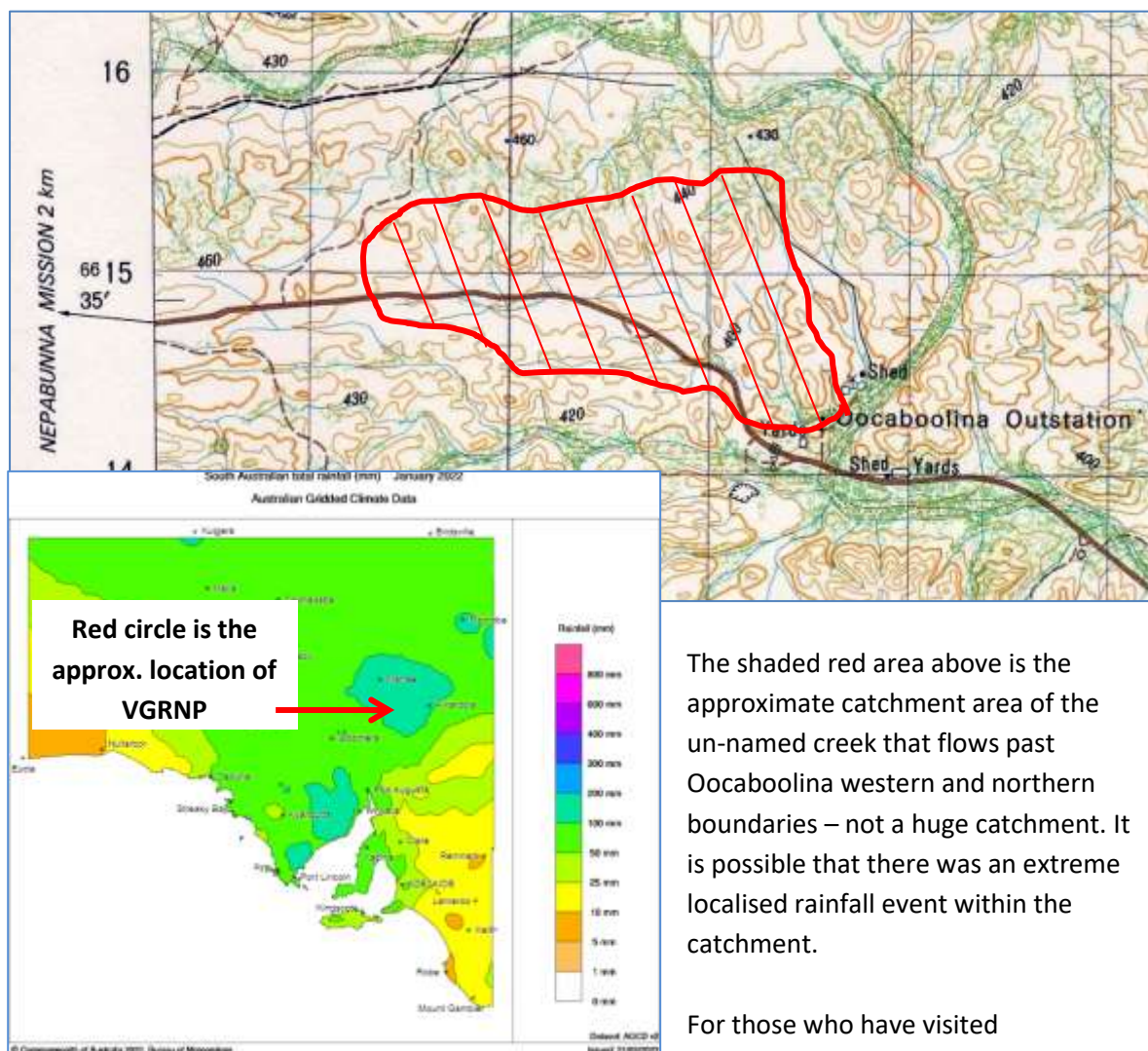


## OOCABOOLINA OUTSTATION

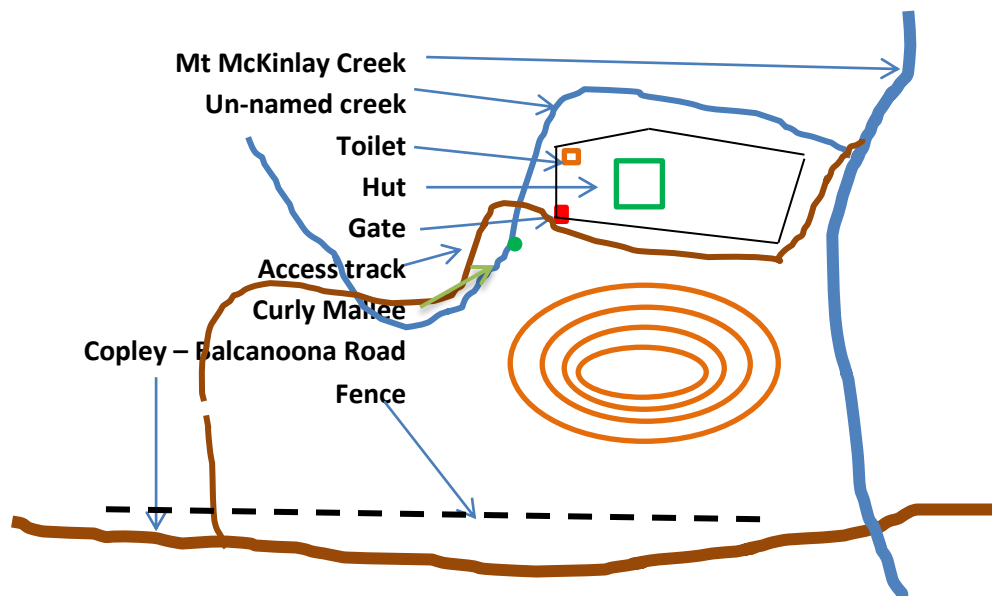
### RAINFALL IN SOUTH AUSTRALIA IN JANUARY 2022

- The State map below courtesy of the Bureau of Meteorology (BOM) outlines rainfall totals across the state for January 2022. The heaviest falls in blue.
- Many parts of South Australia received many times the average for January.
- There are 4 rainfall gauges within the V-GRNP in the Arcoona Creek catchment with telemetry equipment that enables data to be streamed in real time to the BOM.
- One such rain gauge is almost 15 kilometres due north of Oocaboolina Outstation on the Plateau.
- The Plateau gauge received approximately 124mm during January, nearly 3.5 times its long term average for January.
- Most rain fell over a 48 hour period on 21-22 January.
- High localised falls lasting less than an hour were recorded later in January.

**Acknowledgement:** - the above information was extracted from a report by Graham Blair in the Scientific Expedition Group's March 2022 SEGments. Full article can be accessed at:-  
<https://www.scientificexpeditiongroup.org/publications/>



creek takes a sweeping u-bend to the SW of Oocaboolina fenced area before flowing north then east before it enters Mount McKinlay Creek.



Travelling east from Nepabunna one sees the VGRNP sign. The photo below left was taken in May 2018 (during the drought period) and, right, in February 2022, 3 weeks after significant rains.



Entering Oocaboolina is via two crossings of the un-named creek. A Curly Mallee had established itself in the creek bed years ago and looked dead. We noticed in 2021 it had young healthy shoots. It has responded well to the rains, but had collected substantial debris during the flood (right), proceeding out of the creek at the 2<sup>nd</sup> crossing you are looking at the gate and the hut, but in February the gate with its hinged post and 15-20 metres of fencing were not to be seen, wrapped around the toilet.





Eight photos below show the extent of the damage.





The internal flood damage was limited to silt spilled over the floors of the porch and kitchen and also on the southern verandah.



Below -the fence & gate restoration underway.



The rains turned the brown landscape into fields of green.

